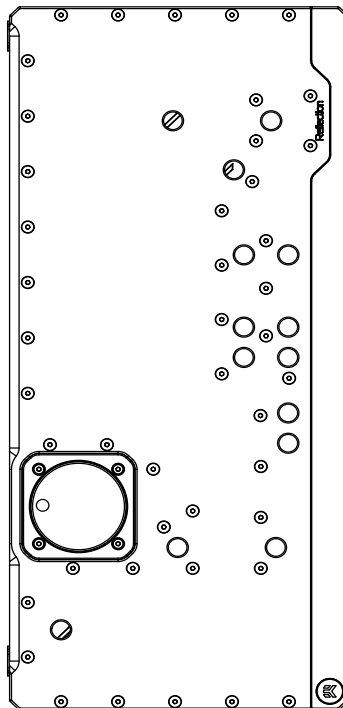


EK-Quantum Reflection PC-011D XL D5 PWM D-RGB

DISTRIBUTION PLATE



Before you start using this product please follow these basic guidelines:

Please carefully read the manual before beginning with the installation process!

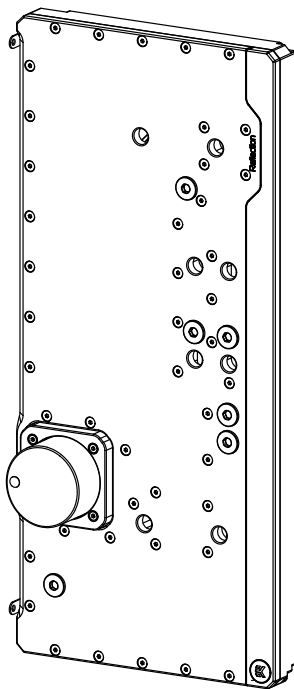
The EK Fittings require only a small amount of force to screw them firmly in place since the liquid seal is ensured by the rubber O-ring gaskets.

The use of corrosion inhibiting coolants is always recommended for any liquid cooling system. EKWB recommends any of the EK-Cryofuel for worry-free usage.

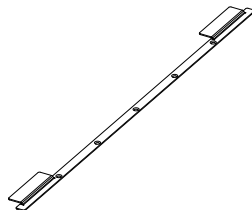
TABLE OF CONTENT

BOX CONTENTS	4
PREPARING THE 011D XL CHASSIS	5
INSTALLING THE DISTRIBUTION PLATE IN THE 011D XL	7
RECOMMENDED DISTRIBUTION PLATE CONFIGURATIONS	9
CONNECTING THE D-RGB LED STRIP	11
CONNECTING THE PUMP	11
TESTING THE LOOP	12
SUPPORT AND SERVICE	13
SOCIAL MEDIA	13

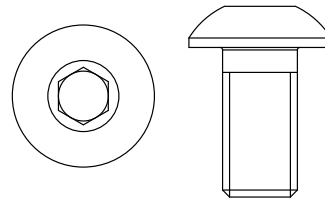
BOX CONTENTS



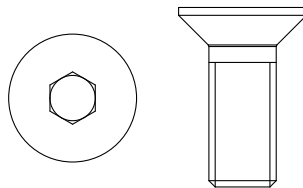
EK-Quantum Reflection PC-O11D XL
D5 PWM D-RGB



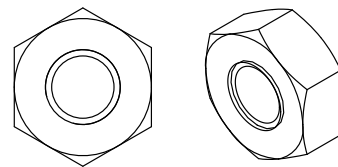
Front mounting Bracket (1 pc)



M3x6 DIN7380 (2 pcs)



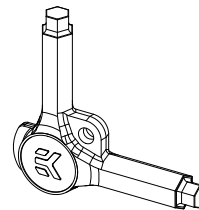
M3x8 DIN7991 (5 pcs)



M3 Nut (2 pcs)

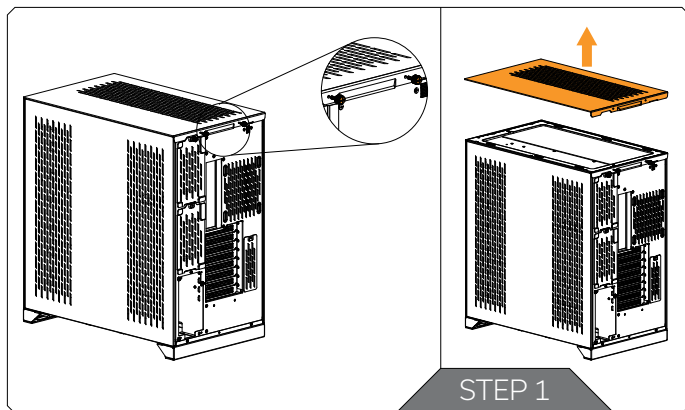


Allen Key 2mm (1 pc)



EK-Loop Multi Allen Key

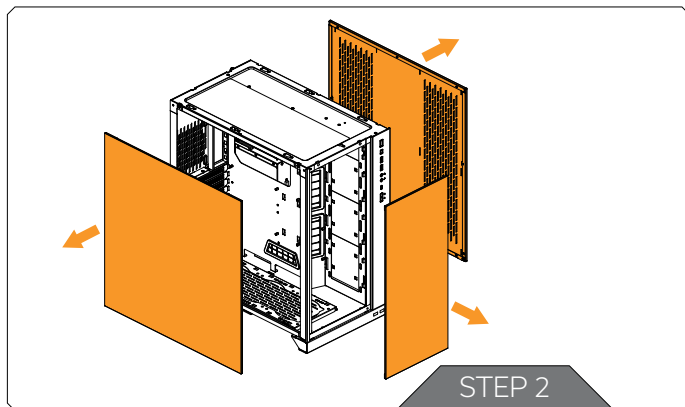
PREPARING THE 011D XL CHASSIS



Before installing the distribution plate, carefully read the PC case manual.

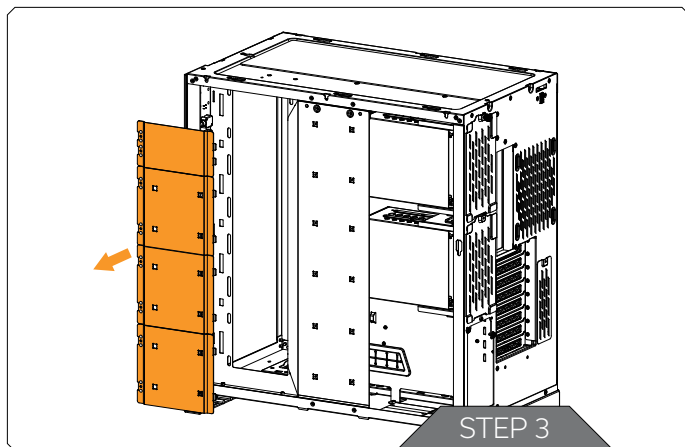
STEP 1

Unscrew the factory provided screws and remove the top panel from the case.



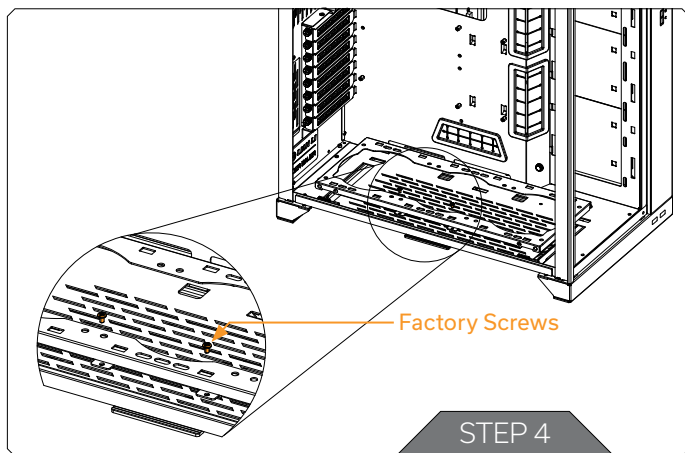
STEP 2

Remove both side panels and the front panel from the case.



STEP 3

The SSD Trays also need to be removed from the back side of the chassis. Once the distribution plate is secured they can be reinstalled as required.

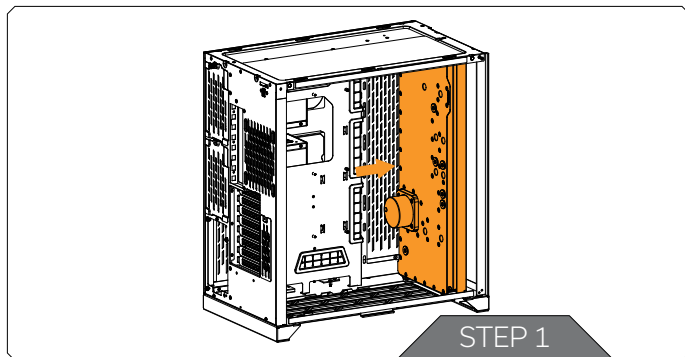


STEP 4

For easier installation of the distribution plate, you should remove the Fan/SSD Tray from the bottom of the case.

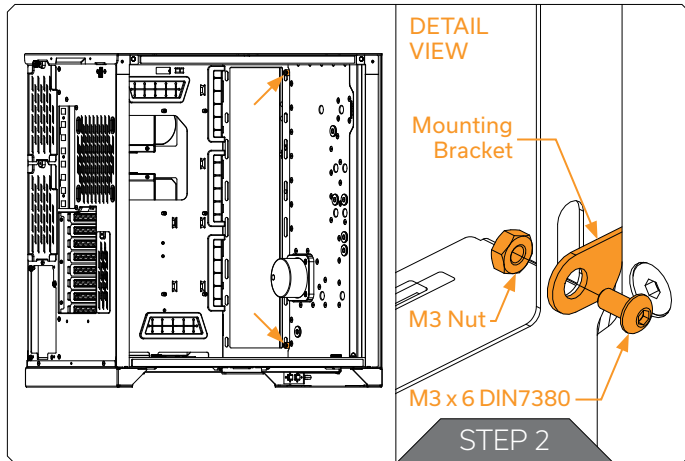
Unscrew the 2(two) marked factory screws and remove the Fan/SSD Tray. After securing the distribution plate, it can be reinstalled with the bottom radiator and fans.

INSTALLING THE DISTRIBUTION PLATE IN THE 011D XL



STEP 1

Carefully place the EK-Quantum Reflection PC-O11D XL D5 PWM D-RGB distribution plate into the PC case and align the mounting holes at the back.

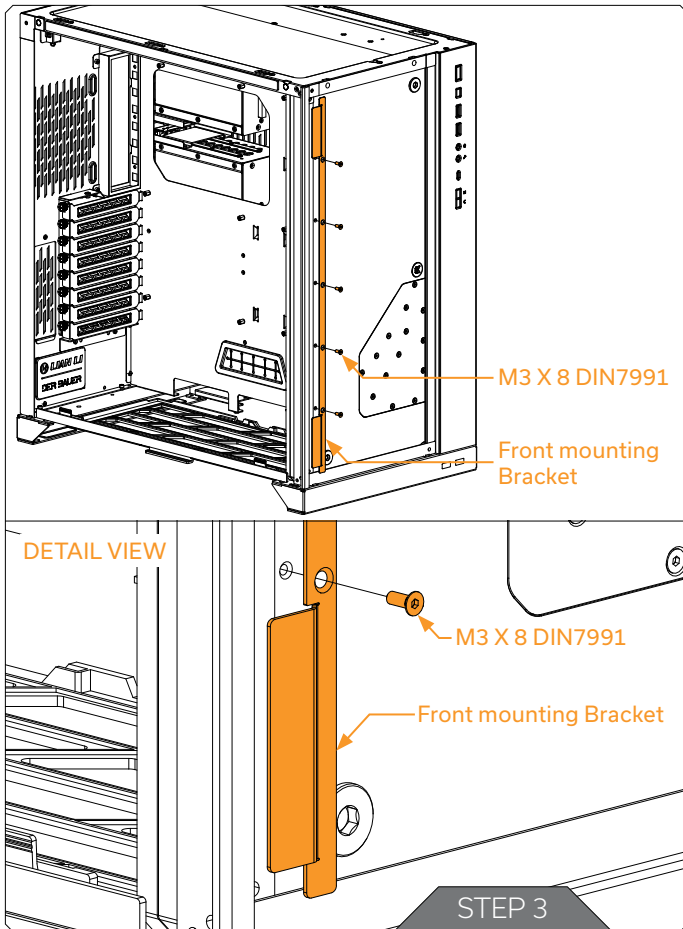


STEP 2

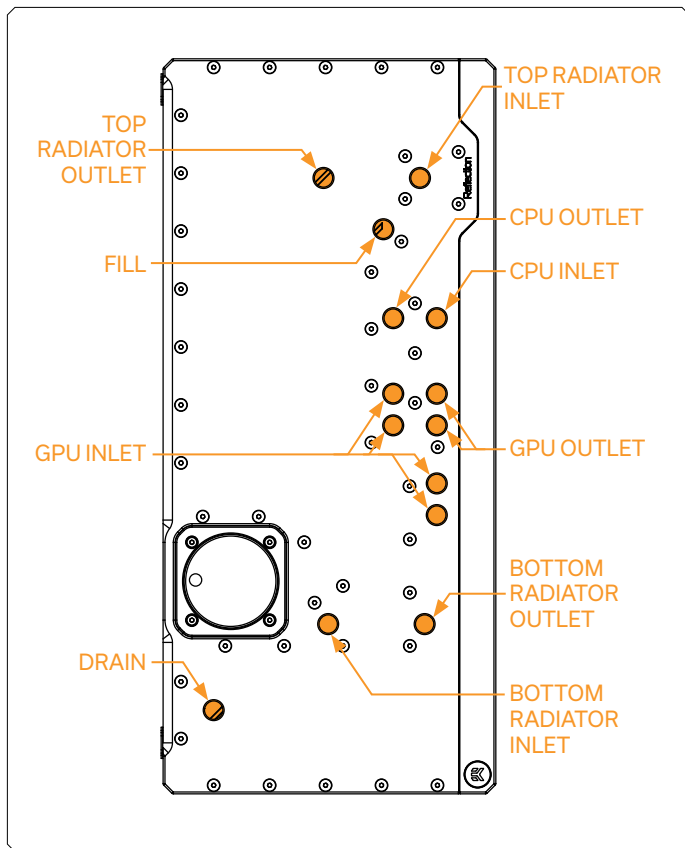
Secure the distribution plate to the chassis with two (2) M3 x 6 DIN7380 and M3 nuts (as shown in the diagram).

STEP 3

Position the front mounting bracket onto the distribution plate and secure it with five(5) M3 X 8 DIN7991 mounting screws.

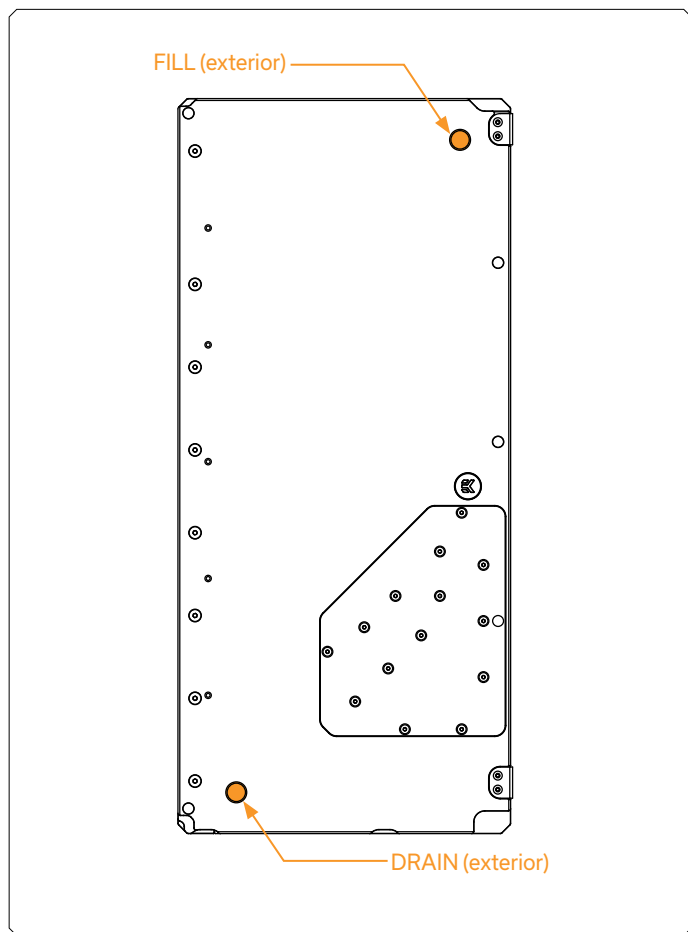


RECOMMENDED DISTRIBUTION PLATE CONFIGURATIONS

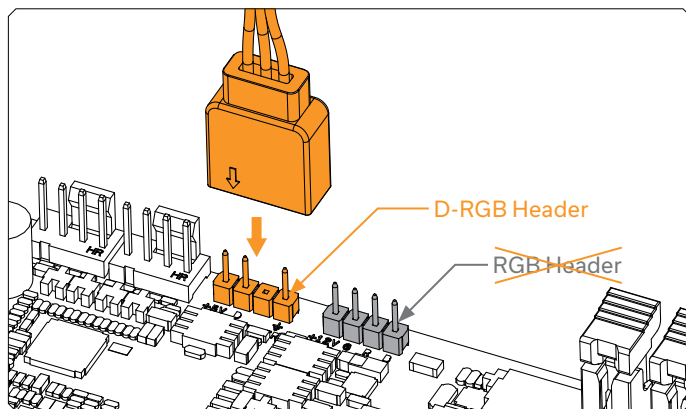


It is mandatory to use at least one of each type of port and all remaining ports should be sealed using the supplied plugs. The EK-Loop Multi Allen Key (6mm, 8mm, 9mm) may be used to install all EK fittings, do not use excessive force.

If one of the prescribed components will not be installed (ie. bottom radiator or GPU block) then one IN and one OUT port must still be joined together in order for this distribution plate to function!

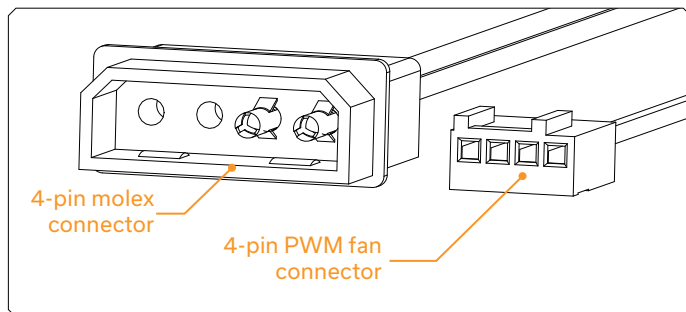


CONNECTING THE D-RGB LED STRIP



Plug the 3-pin connector of the distribution plate D-RGB LED light to the D-RGB HEADER on the motherboard. The LED will work if the pin layout on the header is as follows: **+5V, Digital, Empty, Ground.**

CONNECTING THE PUMP



The EK-D5 PWM pump has two connectors.

- 1. 4-pin Molex:** It must be connected directly to your PSU at all times as it is used to power the pump.
- 2. 4-pin PWM fan:** It can be connected to your motherboard's CPU_ Fan or designated water pump header. It can also be connected to a controller. This cable is used to control and report the rotational speed of the pump. If it's not connected, the pump will run at maximum speed (100% PWM).

TESTING THE LOOP

To make sure the installation of EK components was successful, we recommend you perform a leak test for 24 hours.

When your loop is complete and filled with coolant, connect the pump to a PSU outside of your system. Do not connect power to any of the other components. Turn on the PSU and let the pump run continuously. It is normal for the coolant level to drop during this process as air collects in the distribution plate.

Inspect all parts of the loop, and in the eventuality that coolant leaks, fix the issue and repeat the testing process. Ensure that all hardware is dry before the system is powered on in order to prevent any damage.


SUPPORT AND SERVICE

For assistance please contact:


<http://support.ekwb.com/>

EKWB d.o.o.
Pod lipami 18
1218 Komenda
Slovenia - EU


SOCIAL MEDIA

 EKWaterBlocks

 @EKWaterBlocks

 ekwaterblocks

 EKWBofficial

 ekwaterblocks

